



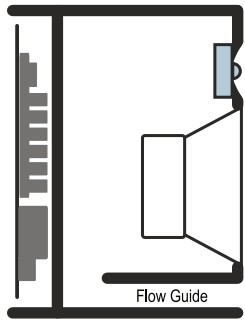
Technical data sheet

A21-M



Download documents

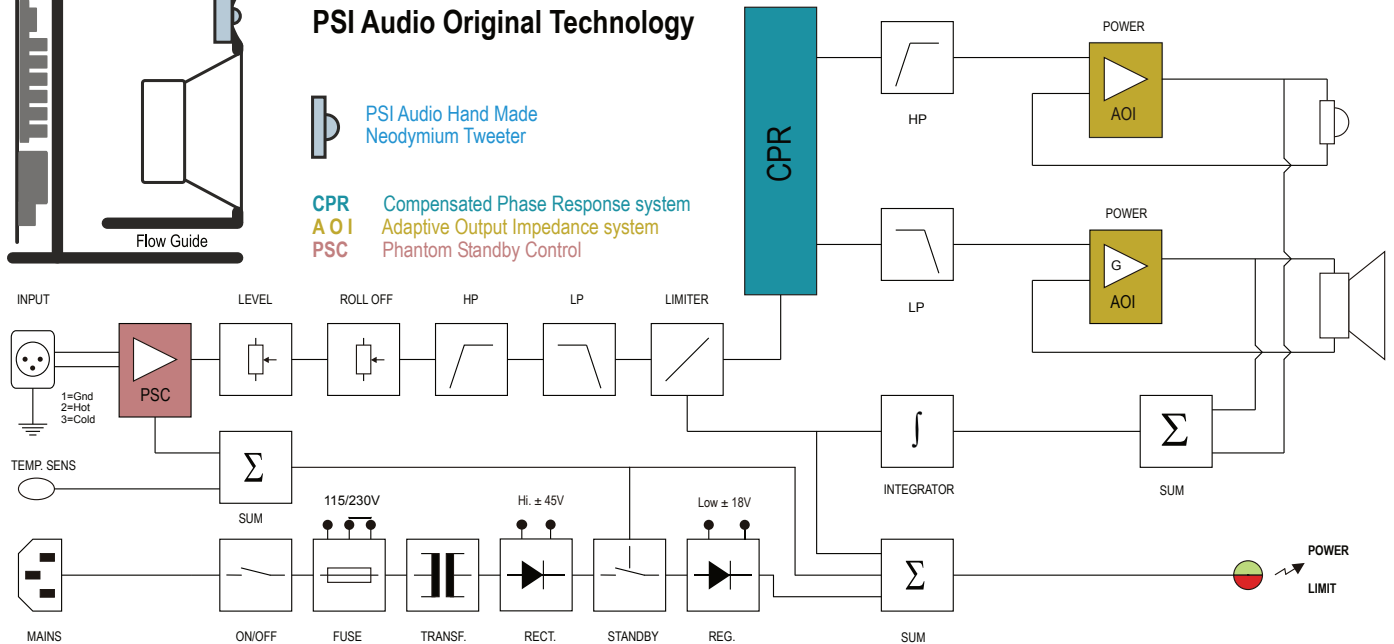




PSI Audio Original Technology

PSI Audio Hand Made Neodymium Tweeter

CPR Compensated Phase Response system
AOI Adaptive Output Impedance system
PSC Phantom Standby Control



Potential peak power	280+55	W
RMS power	60+10	W
Input impedance	Sym 10 kΩ	Ω
Input sensitivity	0.775	Vrms
Input overload	24	Vpp
Continuous max SPL@1 m	106	dB
Short term max. SPL@1m	110	dB
Peak max. SPL@1m	121	dB
Background noise @1m	7	dBA
Signal to noise ratio (S/N)	98	dBA
Mechanical noise (i.e. transformer)	-5	dBA
Bandwidth at -6dB	38-23'000	Hz
SPL tolerances	±2.0	dB
Phase tolerances	±45° (300 Hz – 20 kHz)	deg
Dispersion (H x V)	80 x 40	deg
Directivity factor	SEE GRAPH	
Acoustic power	SEE GRAPH	
Distortion THD	SEE GRAPH	
System	2	ways
Crossover frequency	2'200	Hz
Box material	MDF	
Woofers ext. diam.	240	mm

Woofers ext. diam.	9.4	in
W. diaphragm diam.	172	mm
W. diaphragm diam.	6.8	in
Tweeter ext. dim.	100	mm
Tweeter ext. dim.	3.5	in
T. diaphragm diam.	27	mm
T. diaphragm diam.	1.1	in
Dimensions W x H x D	250 x 400 x 300	mm
Dimensions W x H x D	9.9 x 15.8 x 11.9	in
Net weight	13.2	kg
Net weight	29.1	lbs
Input connector	1 x XLR F / 3P	
Input connections	1=GND, 2=(+), 3=(-)	
Mains voltage	115 / 230(50-60Hz)	V, ±10 %
Mains max DC offset	0.2	V
Standby consumption	1.2	W
Quiescent consumption	6	W
Max continuous power	150	W
RMS continuous consumption	90	W
Max relative humidity	70	%
External temperature range	5-35	°C
Warranty	5 (+1)	years

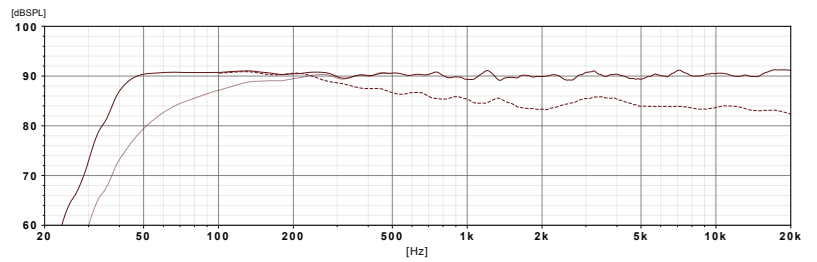
Measurement environment:

- Large anechoic room, temperature 23±2°C, humidity 50±20%
- Typical acoustical measurements, tolerances ±0.5 dB averaging 1/6 Octave

Frequency Response

- SPL@ (-10dBu ; 1m)
- SPL with -10dB Roll Off
- Acoustic Power

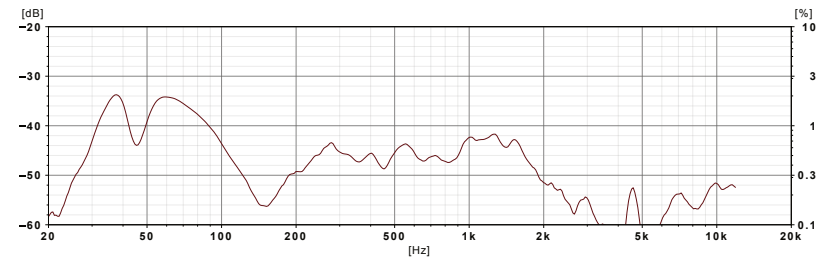
Resolution: 1/48 Octave
Smoothing: 1/6 Octave



Total Harmonic Distortion

- THD@ (-10dBu ; 1m)

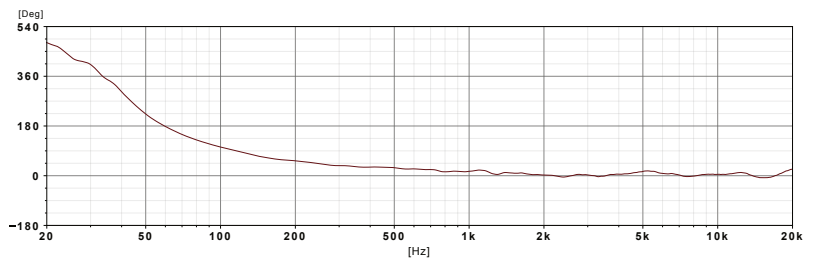
Resolution: 1/48 Octave
Smoothing: 1/6 Octave



Acoustic Phase

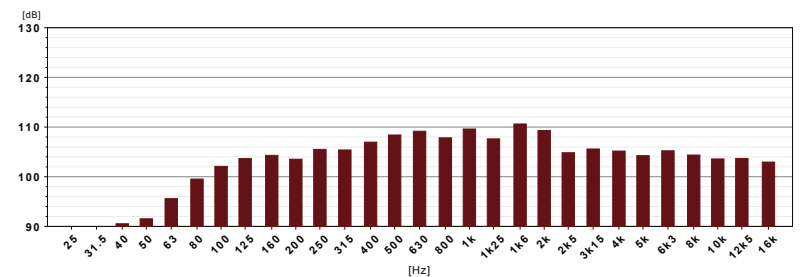
- Acoustic Phase

Delay: 0.382 [ms]
Resolution: 1/48 Octave
Smoothing: 1/6 Octave



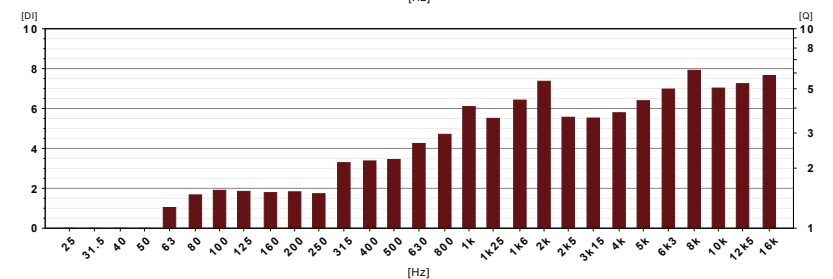
Max Continuous SPL

- Max Continuous SPL @ 1m



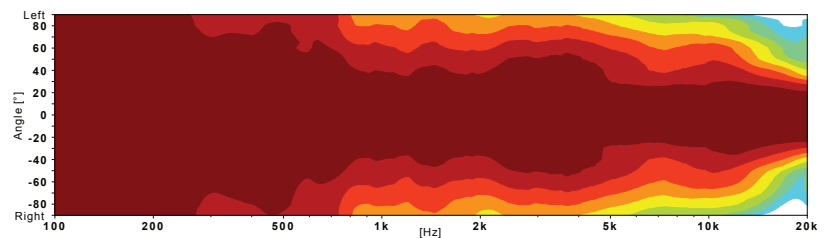
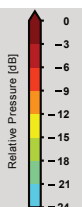
Directivity Index

- Directivity Index



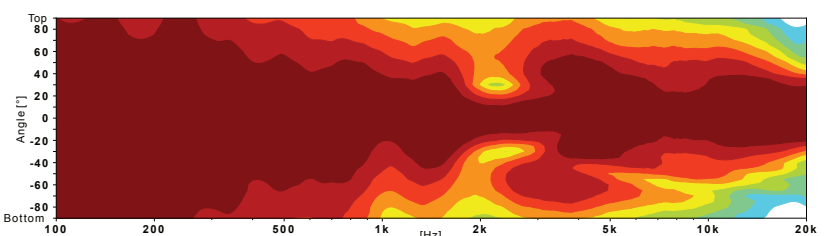
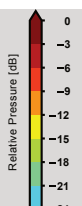
Horizontal Directivity

Frequency resolution: 1/36 Octave
Smoothing: 1/3 Octave



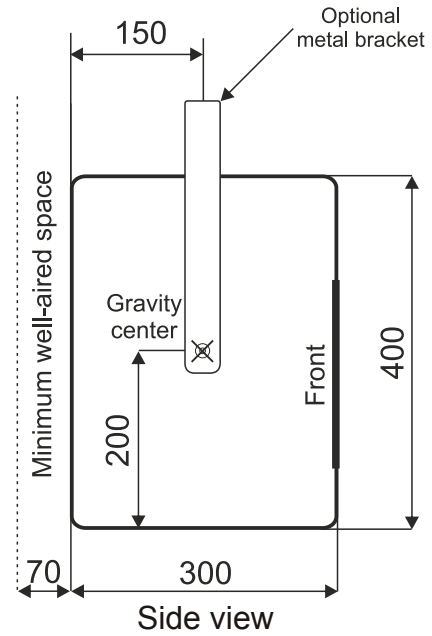
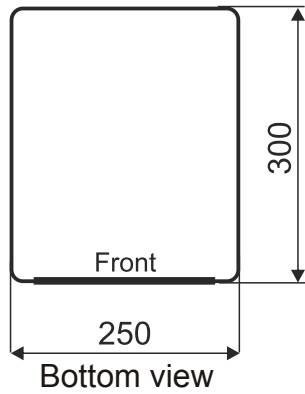
Vertical Directivity

Frequency resolution: 1/36 Octave
Smoothing: 1/3 Octave



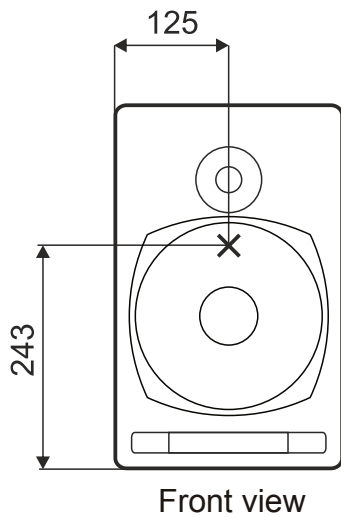
Mounting

All dimensions are in mm



Refer to user manual for information about installation and safety instructions

Acoustical axis



Recommended listening distance

